

## HYS-8000A automatic integration Monitoring System

### System summary



HYS-8000A automatic integration Monitoring System is suitable for industry automatic monitoring system, power automatic monitoring system, residence community automatic monitoring system. The interaction between system and user interface is the Windows graphical to display, graphical interface is clear and intuitive, man-machine interface is friendly and convenient. Use mouse and shortcut keys to control all functions, the operator can operate all kinds of functions intuitively; the function keys of system have the textual description and corresponding operation tips; can monitor comprehensively system operating state and measured values; distributed network structure, to achieve double machine hot standby, automatic switching; having the function of automatic recording the real-time and historical operating data; recording of system running alarm, operating, event, as well as display and print output; in order to prevent the misuse, unauthorized operations, realization of rights management, by giving the operators the different login passwords, different permissions person can complete or dealing with the appropriate personnel to complete within the purview of the things. This system is basic on the windows 2000 operation system.

### System components

HYS-8000A automatic integration Monitoring System including "develop environment" and "running environment" two parts, "develop environment" and "running environment" exist at same time, also can running respectively, can changed on any time; complete project in "develop environment", must run in the "running environment", it supply the other auxiliary tools, such as: project management, rules management, management center and so on.

## System functions

### 1. Screen display function

Screen Navigation  
 Screen Zoom  
 Screen Roaming  
 Layer selection  
 Display Data  
 Show Status  
 Show Curve  
 Show Table  
 Bar graph display  
 Show Time  
 Color change  
 Status flashing  
 Artificial location



### 2. Artificial operation functions

Screen switching  
 Remote function  
 Remote regulating function  
 Parameter tuning  
 Opening-closing operation  
 Lifting Operation  
 Resetting operation  
 Setting the number of artificial  
 Artificial Set



### 3. Background language function

Four fundamental operations of arithmetic  
 Logical judgement  
 Common Functions

### 4. Equipment management features

Communication enabled  
 Correction time enable  
 Remote controlling Enable

### 5. Serial port management features

Multi-Serial Communication  
 Multi-threaded communication  
 RS232/RS485 communication mixture

## System functions

### 6. Network management functions

Ethernet, TCP / IP protocol, real-time network communication

Network clock synchronization

Communications front-end processor hot backup changeover

The server

(SCADA server, MIS server, database server)

Client

(monitor work stations, engineers work stations, remote maintenance workstation)

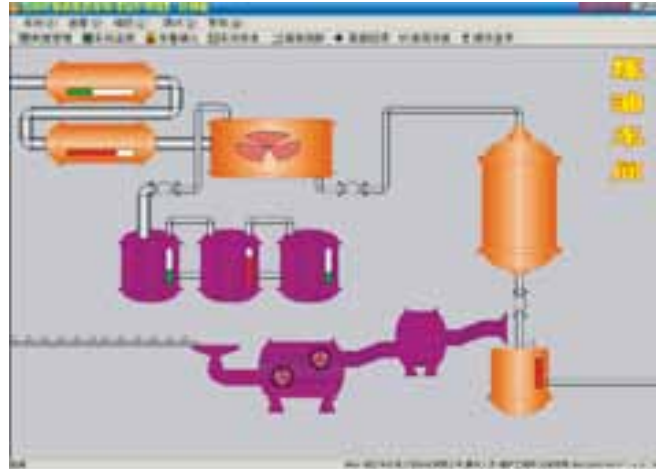
### 7. Database management function

Support ODBC interface, DAO Database Engine

Database Search

Database Synchronization

Specialized databases and synchronize the use of commercial databases



### 8. Four remote function support

Telemetry

Telesignalling

Electric degree impulse

Correction time for equipment

Remote Control opening-closing

Remote lifting

Equipment resetting

Parameter tuning

Protection Events

Fault oscillograph

### 9. Other auxiliary function

Acoustic Alarm

Run Log

Online Maintenance

Security Login

System Detection

